

# PROPOSED DEVELOPMENT PLAT

AD1705051  
A01705051

Plat Book 102 Page 9

## STONEHENGE A TRACT OF LAND IN SECTION 31 AND 32, T.1 S., R.9 W. AND SECTION 5, T.2 S., R.9 W. OF THE 3RD PRINCIPLE MERIDIAN, MONROE AND ST. CLAIR COUNTIES, ILLINOIS

SHEET 2

**OWNERS CERTIFICATE:**  
THE UNDERSIGNED OWNERS OF THE TRACT OF LAND HEREIN PLATED AND FURTHER DESCRIBED IN THE FOREGOING SURVEYOR'S CERTIFICATE HAVE CAUSED THE SAME TO BE SURVEYED AND SUBDIVIDED IN THE MANNER SHOWN ON THIS PLAT, WHICH SUBDIVISION SHALL HEREAFTER BE KNOWN AS "STONEHENGE". WELSHIRE (50' WIDE) DRIVE, DONNINGTON (50' WIDE) COURT, EDENBURG (50' WIDE) COURT, KENNET (50' WIDE) DRIVE, WEBURY (50' WIDE) COURT, AVENUE (50' WIDE) COURT, SLEURY (50' WIDE) COURT, TOGETHER WITH ALL CURB-DE-SACS AND ROBINHOODS LOCATED AT THE STREET INTERSECTIONS WHICH FOR BETTER IDENTIFICATION ARE SHOWN HEREON ON THIS PLAT ARE HEREBY DEDICATED TO MONROE AND ST. CLAIR COUNTIES FOR PUBLIC USE FOREVER.

ALL EASEMENTS AND PRIVATE ROADS SHOWN ON THIS PLAT UNLESS DESIGNATED FOR OTHER PURPOSES, PURPOSES, ARE HEREBY DEDICATED TO ST. CLAIR AND MONROE COUNTIES, ILLINOIS - AMERICAN WATER COMPANY, THE RELEVANT GAS COMPANY, MONROE COUNTY ELECTRIC COMPANY, GTE TELEPHONE COMPANY, THEIR SUCCESSORS AND ASSIGNS AS THEIR INTERESTS MAY APPEAR FOR THE PURPOSES OF IMPROVING, CONSTRUCTING, MAINTAINING, AND REPAIRING OF PUBLIC UTILITIES AND SEWER AND DRAINAGE FACILITIES, WITH THE RIGHT OF TEMPORARY USE OF SAID GROUND NOT OCCUPIED BY IMPROVEMENTS FOR THE EXAMINATION AND ERECTION OF MATERIALS DURING INSTALLATION, REPAIR OR REPLACEMENT OF SAID UTILITIES, SEWERS AND DRAINAGE FACILITIES, IN THE EVENT THAT ADDITIONAL UTILITY EASEMENTS BECOME NECESSARY, COMMON GROUND IS HEREBY DEDICATED FOR SUCH USE.

THE EASEMENTS FOR STORM SEWERS SHOWN HEREON ARE TO BE CONSIDERED APPROPRIATE. THE LOCATIONS OF SAID EASEMENTS ARE TO BE CONTROLLED ALONG THE EXISTING STORM STRUCTURES AS THEY ARE CONSTRUCTED.

ALL COMMON GROUND EASEMENTS, SUCH AS CURB-DE-SACS ISLANDS AND DIVIDED STREET ISLANDS OR MEDIAN STRIPS, ARE HEREBY DEDICATED TO THE TRUSTEES OF THE APPROPRIATED SUBDIVISION FOR LANDSCAPE MAINTENANCE, HOWEVER, NO ABOVE GROUND STRUCTURE, OTHER THAN REQUIRED STREET LIGHTS OR OTHER PUBLIC UTILITIES IN ACCORDANCE WITH THE APPROVED IMPROVEMENT PLANS MAY BE CONSTRUCTED OR INSTALLED WITHIN A CURB-DE-SACS ISLAND, DIVIDED STREET ISLAND, OR MEDIAN STRIP, WITHOUT AUTHORIZATION BY THE MONROE AND ST. CLAIR COUNTIES DEPARTMENT OF HIGHWAYS AND TRAFFIC THROUGH THE ISSUANCE OF A SPECIAL USE PERM.

BEARING LINES AS SHOWN ON THIS PLAT ARE HEREBY ESTABLISHED. THIS SUBDIVISION IS SUBJECT TO CONDITIONS AND RESTRICTIONS CONTAINED IN AN INSTRUMENT FILED IN BOOK \_\_\_\_\_ PAGE \_\_\_\_\_ IN THE MONROE AND ST. CLAIR COUNTIES RECORDS.

THE COMMON GROUND SHOWN ON THIS PLAT HAS BEEN CONVEYED TO THE TRUSTEES OF THE APPROPRIATED SUBDIVISION BY GENERAL WARRANTY DEED RECORDED THE 21<sup>ST</sup> DAY OF \_\_\_\_\_ AS DAILY # \_\_\_\_\_ IN THE MONROE AND ST. CLAIR COUNTIES RECORDS.

IN WITNESS WHEREOF, WE HAVE HERETO SET OUR HAND, THIS 1<sup>ST</sup> DAY OF \_\_\_\_\_ 2002.

OWNER: JACTARA, LLC  
BY: *Mark HBS*  
MARY LUCIO

**NOTARY PUBLIC CERTIFICATE:**  
STATE OF ILLINOIS )  
COUNTY OF ST. CLAIR )  
I, \_\_\_\_\_, Notary Public in and for the State of Illinois, do hereby certify that \_\_\_\_\_ is the true and correct owner of the above described premises.

**COUNTY CLERK CERTIFICATE**  
STATE OF ILLINOIS )  
COUNTY OF ST. CLAIR )  
I, \_\_\_\_\_, County Clerk of St. Clair County, Illinois, do hereby certify that there are no delinquent general taxes, no unpaid forfeited taxes, and no redeemable tax sales against any of the land included in the attached plat.

I FURTHER CERTIFY THAT I HAVE RECEIVED ALL STATUTORY FEES IN CONNECTION WITH THE ATTACHED PLAT.  
GIVEN UNDER MY HAND AND SEAL AT \_\_\_\_\_ THIS 25<sup>TH</sup> DAY OF \_\_\_\_\_ 2002.

COUNTY CLERK: *Debra Williams*  
DATE: *9/2/02*  
DEPUTY CLERK: *Debra Williams*

**911 EMERGENCY CERTIFICATE:**  
I, THE UNDERSIGNED, 911 COORDINATOR OF THE ST. CLAIR COUNTY, ILLINOIS, HEREBY APPROVE THIS PLAT AS TO THE ADDRESSES STREET NAMES ON THIS 22<sup>ND</sup> DAY OF September 2002.

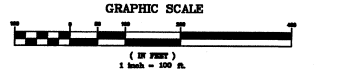
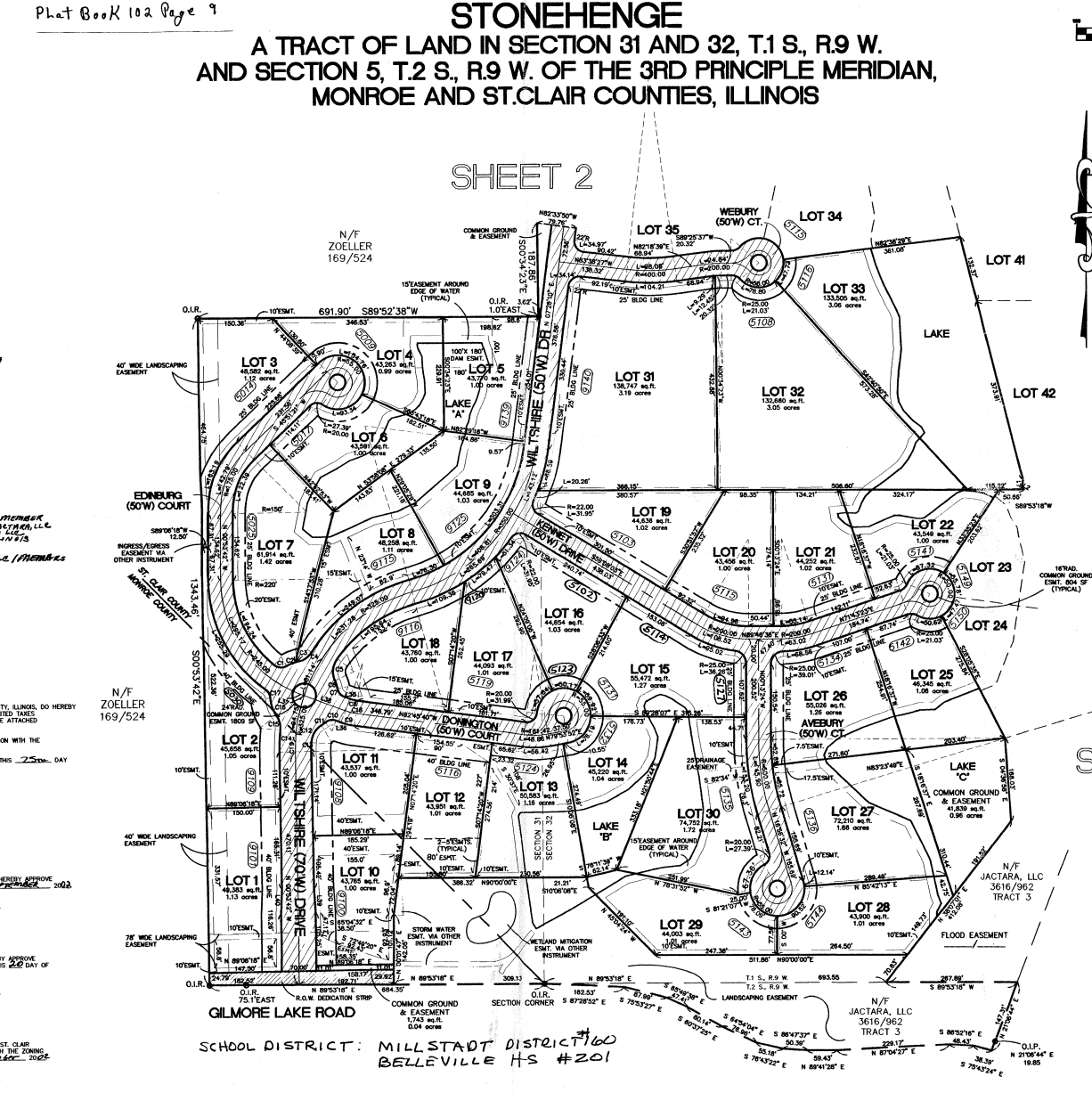
*Marna V. Trudner*  
911 COORDINATOR  
ST. CLAIR COUNTY, ILLINOIS

**HIGHWAY COMMISSIONER CERTIFICATE:**  
I, THE UNDERSIGNED, HIGHWAY COMMISSIONER OF MLLISTADT TOWNSHIP, HEREBY APPROVE THIS PLAT AS TO STREET NAMES AND IMPROVEMENTS, AS SHOWN HEREON THIS 22<sup>ND</sup> DAY OF September 2002.

*George Breda*  
HIGHWAY COMMISSIONER  
MLLISTADT TOWNSHIP

**MAPPING AND PLATTING CERTIFICATE:**  
I, THE UNDERSIGNED, DIRECTOR OF MAPPING AND PLATTING AND ZONING FOR ST. CLAIR COUNTY, ILLINOIS, HAVE REVIEWED THIS PLAT AND FIND IT IN CONFORMANCE WITH THE ZONING ORDINANCES OF ST. CLAIR COUNTY, ILLINOIS, THIS 22<sup>ND</sup> DAY OF September 2002.

*John A. Wilson*  
DIRECTOR OF MAPPING AND PLATTING AND ZONING  
ST. CLAIR COUNTY, ILLINOIS



CURVE TABLE	LINE TABLE
C1 28.89 22.00	L1 18.54 N04°00'00"E
C2 19.46 69.00	L2 24.41 N89°03'00"W
C3 4.10 89.00	L3 35.88 N89°03'00"W
C4 34.38 43.00	L4 26.87 S72°28'21"E
C5 48.31 43.00	L5 25.34 S82°32'00"E
C6 16.83 68.00	L6 21.53 N00°30'00"W
C7 16.83 68.00	L7 40.09 N08°44'30"E
C8 16.83 68.00	L8 45.21 N05°17'00"E
C9 16.83 68.00	L9 5.86 N02°17'00"E
C10 22.80 22.00	L10 46.71 N00°24'00"W
C11 8.44 69.00	L11 14.94 N08°28'27"E
C12 48.31 43.00	L12 48.97 N00°29'00"E
C13 17.72 292.00	L13 52.97 N01°23'00"W
C14 43.73 397.00	L14 39.50 N04°30'00"E
C15 31.00 43.00	L15 61.85 N10°31'30"W
C16 37.80 68.00	L16 38.79 N04°30'00"E
C17 19.58 22.00	L17 12.21 N04°03'00"E
C18 19.58 22.00	L18 81.33 N08°08'27"E
C19 19.58 22.00	L19 16.85 N01°15'00"W
	L20 19.28 N89°15'00"W
	L21 58.56 N00°30'00"W
	L22 42.77 N87°03'41"W
	L23 58.56 N00°30'00"W
	L24 26.38 S83°08'24"E
	L25 32.17 S83°08'24"E
	L26 31.48 S84°20'00"E
	L27 47.44 S87°24'00"E
	L28 31.48 S84°20'00"E
	L29 46.17 S85°24'00"E
	L30 31.48 S84°20'00"E
	L31 78.38 S87°03'41"W
	L32 32.17 S83°08'24"E
	L33 51.35 S82°41'12"E
	L34 11.40 S85°02'00"E
	L35 11.40 S85°02'00"E
	L36 89.37 S89°05'21"E
	L37 20.06 S00°42'00"E
	L38 80.06 S01°08'00"W

● DENOTES: FOUND SURVEY MONUMENT.  
○ DENOTES: SET IRON ROD WITH CAP.  
NOTE: A IRON ROD WITH CAP WILL BE SET AT EACH LOT CORNER, WITH THE EXCEPTION OF THE LOTS WITH LAKE FRONTAGE. A MONUMENT CORNER WILL BE SET AT A CONVENIENT DISTANCE ALONG THE LAKE LOT'S PROPERTY LINE.

STATE OF ILLINOIS )  
ST. CLAIR COUNTY )  
This instrument was FILED FOR RECORD on September 30, 2002 at \_\_\_\_\_ in Book 102 Page 09 of \_\_\_\_\_  
*Debra Williams*  
County Clerk

SHEET 3

**SURVEYOR'S CERTIFICATE:**  
THIS IS TO CERTIFY TO THE PUBLIC CONSTRUCTION COMPANIES THAT AT THEIR REQUEST, WE BURDINE AND ASSOCIATES, INC. IN THE MONTH OF DECEMBER, 2002, HAVE PREPARED A SUBDIVISION PLAT BASED ON A BOUNDARY SURVEY MADE BY \_\_\_\_\_ IN THE MONTH OF JULY 27, 1999, BEING A TRACT OF LAND IN SECTIONS 31 AND 32, TOWNSHIP 1 SOUTH, RANGE 9 WEST AND IN SECTION 5, TOWNSHIP 2 SOUTH, RANGE 9 WEST OF THE THIRD PRINCIPLE MERIDIAN, MONROE AND ST. CLAIR COUNTIES, ILLINOIS.

*Paul D. Burdine*  
BURDINE AND ASSOCIATES, INC.  
1838 Jeffco Blvd.  
Anold, Mo. 63001  
9/2/02

**STONEHENGE SUBDIVISION**  
**RECORD PLAT**  
**BURDINE AND ASSOCIATES, INC.**  
Registered Land Surveyors  
636-282-1600  
FIELDWORK BY: PRZ  
CHECKED BY: AP  
DATE: 9-12-02  
PROJECT NO: 99132  
SHEET NO: 1 OF 3

SCHOOL DISTRICT: MILLSTADT DISTRICT #160  
BELLEVILLE HS #201