

Professional Real Estate Auctions By:

**Adam's**  
Auction & Real Estate Services, Inc.

Toll Free: 1-877-566-8751

Adam Jokisch  
Mobile (618) 530-8751

For Online Bidding Visit:  
[www.AdamsAuctions.hibid.com](http://www.AdamsAuctions.hibid.com)

**Online Only Real Estate Auction**  
**1980 Highway N, Pacific, MO 63069**

**3BR/3BA HOME**  
**WALK-OUT BASEMENT**  
**ATTACHED**  
**2-CAR GARAGE**



***Bidding Closes: 5pm***  
***Wednesday, May 27, 2026***

***Viewing 12-2pm***  
***Sunday, May 24, 2026***

Text ADAMS to 1-800-496-6299 To Be  
Notified of ALL of our Upcoming Auctions

**County:** Franklin ♦ **2024 Taxes:** \$3,163

**Parcel Number:** 19-6-14.0-0-099-029.000

**Exemptions:** None

**Zoning:** Single Family

**Total Lot Size:** 1.62± Ac

**Schools:** Meramac Valley R-III & Pacific HS

Terms: \$10,000 Down Day of Sale on Real Estate  
Balance Due in 30 Days ♦ 6% Buyers Premium

List subject to change without notice

Final Bid is Subject to Owner/Seller Approval. LIC# 444.000169

Any announcement made day of sale takes precedence over any printed material



Enclosed information was obtained from sources considered reliable. However, the auction company does not guarantee the accuracy of this information. Said information is subject to change availability or update without notice. Seller/Landlord & Auction Company make no representation as to the environmental condition of the property and recommend that Purchaser/Tenant obtain an independent investigation. Final bid is subject to Owner/Seller approval.

# 1980 Highway N Property Information

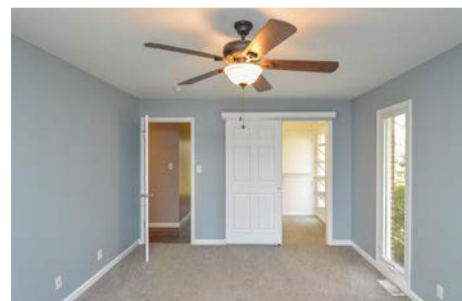
3BR/3BA ~ 2,018± Finished SF ♦ Year Built: 1974 ♦ Forced Air Heating ♦ Central Air ♦ Gas Furnace ♦ Gas Water Heater  
Water & Sewer: Public & Exterior Well Water ♦ Roof: Shingle (New in '24) ♦ 2 Wood Burning Burning Fireplaces  
Basement: Full, Unfinished ~ Walk-Out (Waterproofed in '26) ♦ Sump Pump Electric: Circuit Breaker

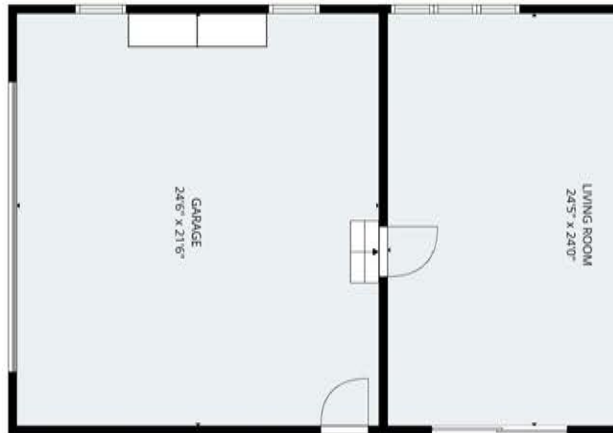
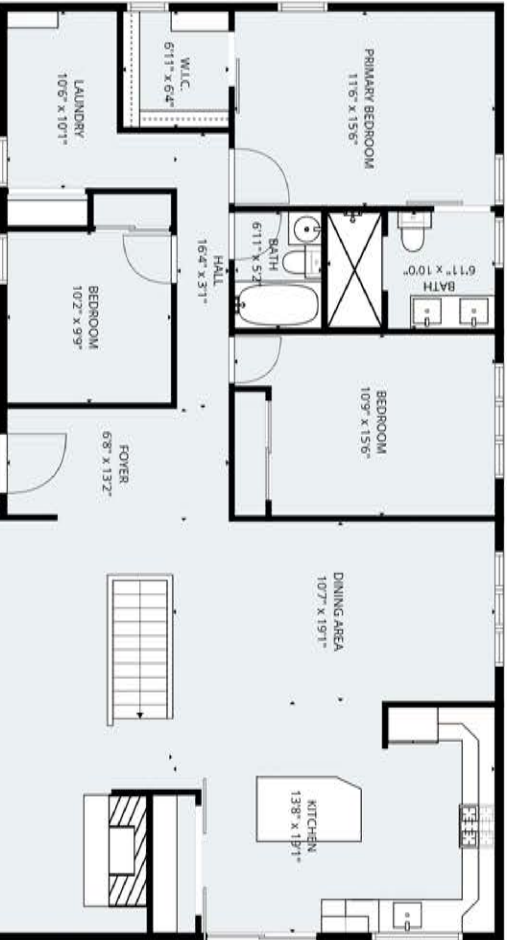
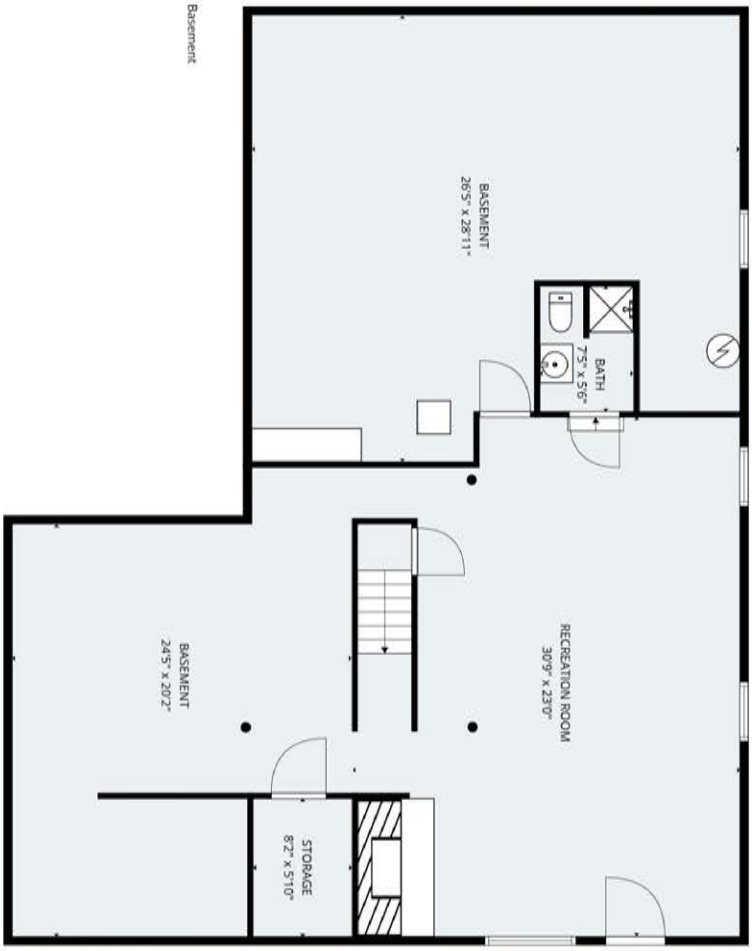


Enjoy the feel of country living while remaining just minutes from town in this beautifully maintained 3BR/3BA solid brick ranch situated on a 1.62± acre lot in Pacific. The home features an inviting open-concept layout with premium LVP flooring and a spacious living room centered around a wood-burning fireplace, with sliding glass doors leading to a concrete patio for seamless indoor-outdoor living. The kitchen offers custom cabinetry, stone countertops, a tiled backsplash, and a large center island, complemented by a formal dining area ideal for gatherings. Two well-sized bedrooms share a conveniently located full bathroom, while the primary suite provides a private retreat with a large walk-in closet and a spa-inspired bathroom featuring a custom tiled stand-alone shower. The unfinished walk-out lower level offers excellent potential for expansion and includes a three-quarter bathroom, and a large rec area with a second wood-burning fireplace and direct backyard access. Exterior highlights include an oversized attached two-car garage, a fully fenced backyard, mature trees offering shade and privacy, and both a deck and patio for outdoor enjoyment. Notable improvements include a new roof installed in 2024, with the deck freshly stained and the basement professionally waterproofed in 2026. Updates to the kitchen, bathroom, and windows were completed in 2015. This property offers space, style, and versatility in a peaceful setting, presenting an exceptional opportunity for its next owner.



# *Additional Property Photographs*





Please check the listing detail for the square footage. All measurements were captured via 3D laser scans, but are approximate.

