

ST. LIBORY, IL

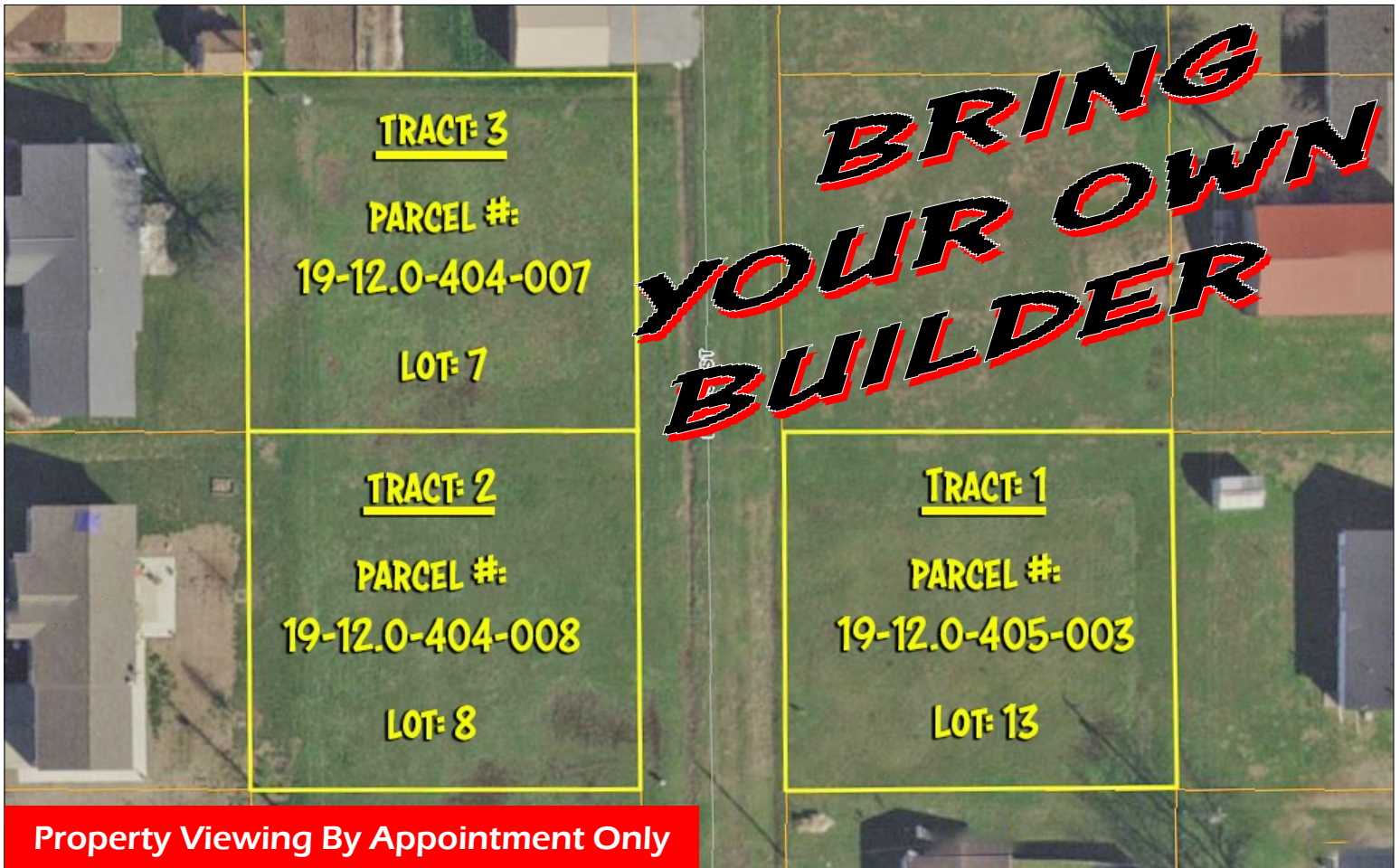
# RESIDENTIAL BUILDING LOT AUCTION

## WEDNESDAY, AUGUST 1, 2018 @ 6 PM

Auction Held: St. Clair County Event Center, 1550 E State Route 15, Belleville, IL 62221

Property Address: XXXX MELISSA STREET, ST. LIBORY, IL 62282

### 3 SUBDIVISION LOTS SELLING SEPARATELY



County: St. Clair • Exemptions: None • Schools: St. Libory Dist. 30 & Freeburg HS

**Buyer is Responsible for Building Rules & Requirements with the Appropriate Authority**

**1 Block from City Park & Close to Schools**

**ALL UTILITIES AVAILABLE AT OR NEAR PROPERTY**

Parcel Number	2017 Taxes	Lot Size	Zoning	Tract Number
19-12.0-405-003	\$86.38	100' x 108' .251+/- Ac.	Single Family	Tract 1
19-12.0-404-008	\$86.38	100' x 108' .251+/- Ac.	Single Family	Tract 2
19-12.0-404-007	\$86.38	100' x 108' .251+/- Ac.	Single Family	Tract 3

Professional Real Estate Auctions by:

**Adam's**  
Auction & Real Estate Services, Inc.  
Toll Free: 1-877-566-8751  
Adam Jokisch  
618-530-8751 (mobile #)

For Live Online Bidding Visit:

[www.adamsauctions.com](http://www.adamsauctions.com)



Text SOLDIT to 22828 to Join Our E-Mail List



TERMS:

\$3,000 DOWN EACH TRACT DAY OF SALE ON REAL ESTATE

BALANCE DUE IN 30 DAYS

10% BUYERS PREMIUM

OR \$1,000 MINIMUM

ANY ANNOUNCEMENT MADE DAY OF SALE TAKES PRECEDENCE OVER ANY PRINTED MATERIAL. LIST SUBJECT TO CHANGE WITH OUT NOTICE.

LIC # 044000169

THE ENCLOSED INFORMATION WAS OBTAINED FROM SOURCES CONSIDERED RELIABLE, HOWEVER, THE AUCTION COMPANY DOES NOT GUARANTEE THE ACCURACY OF THIS INFORMATION. SAID INFORMATION IS SUBJECT TO CHANGE AVAILABILITY OR UPDATE WITHOUT NOTICE. SELLER/LANDLORD AND AUCTION COMPANY MAKE NO REPRESENTATION AS TO THE ENVIRONMENTAL CONDITION OF THE PROPERTY AND RECOMMENDED THAT THE PURCHASER/TENANT OBTAIN AN INDEPENDENT INVESTIGATION.